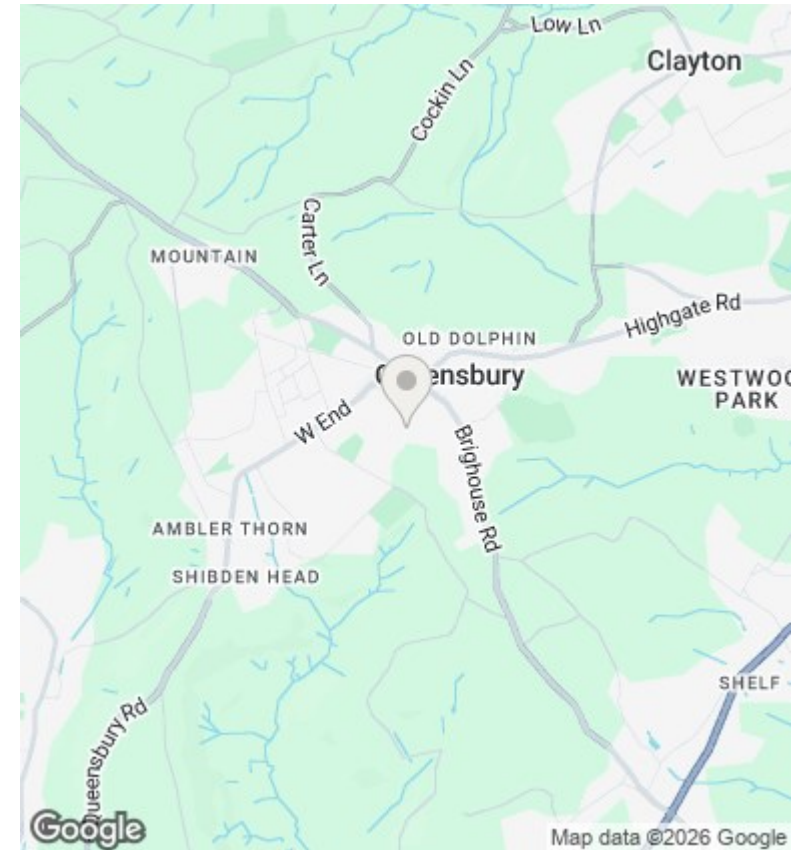
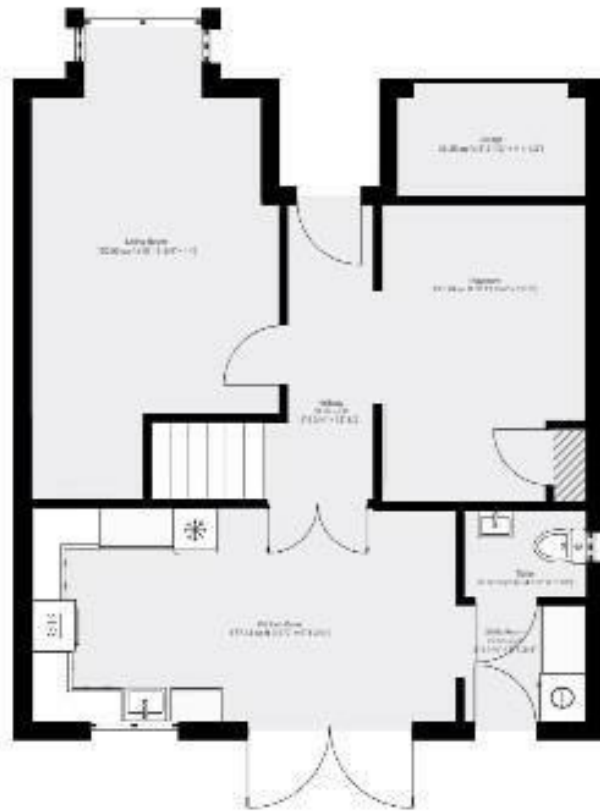




## 2 Old Mill Dam Lane, Queensbury, Bradford, BD13 2FP

£370,000

- IMPRESSIVE FOUR BEDROOM DETACHED
- DESIRABLE POSITION WITH OPEN OUTLOOK
- POPULAR LOCATION CLOSE TO AMENITIES
- ARRANGE YOUR VIEWING NOW
- IMMACULATELY PRESENTED
- BLOCK PAVED DRIVEWAY
- FOUR DOUBLE BEDROOMS
- MANY EXTRA'S AND IMPROVEMENTS
- LANDSCAPED GARDENS
- UTILITY ROOM AND WC



## Directions

## Viewings

Viewings by arrangement only.  
Call 01274884040 to make an appointment.

## Council Tax Band

A

## EPC Rating:

B

Energy Efficiency Rating		
	Current	Potential
Very energy efficient - lower running costs		
(92 plus) <b>A</b>		92
(81-91) <b>B</b>	81	
(69-80) <b>C</b>		
(55-68) <b>D</b>		
(39-54) <b>E</b>		
(21-38) <b>F</b>		
(1-20) <b>G</b>		
Not energy efficient - higher running costs		
<b>England &amp; Wales</b>	EU Directive 2002/91/EC	